





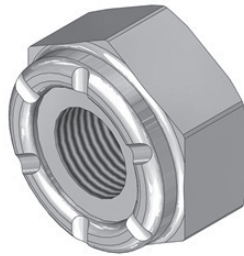


Model 20:
Home & Garden Cart

Parts List

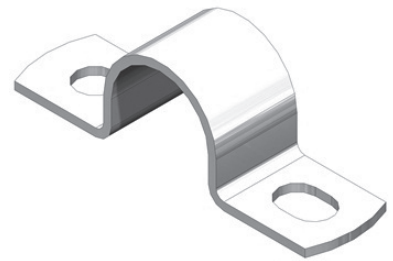
- A** 6 pcs  1/2" Bolt
B 4 pcs  5/8" Bolt
C 2 pcs  3/4" Bolt
D 2 pcs  1" Bolt
E 8 pcs  1 1/4" Bolt
F 4 pcs  1/2" Screw

G



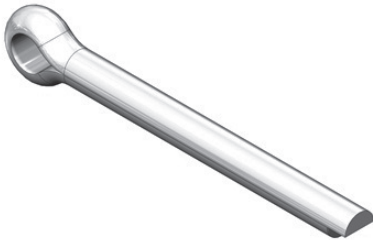
Lock Nut: 8 pcs

H



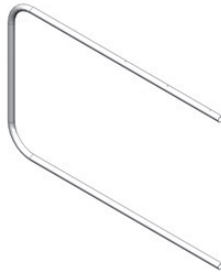
Axle Clamp: 2 pcs

I



Cotter Pin: 2 pcs

J



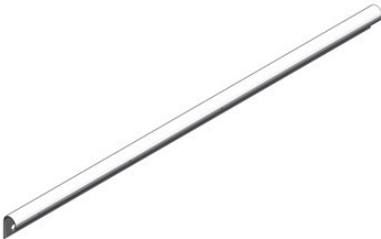
Handle: 1 pc

K



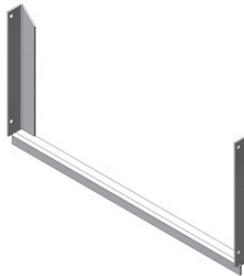
Leg Stand: 1 pc

L



Handle Sleeve: 2 pcs

M



Dump Assembly: 1 pc

N



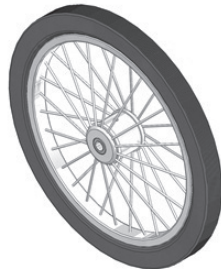
Aluminium Angles: 2 pcs

O



Axle: 1 pc

P



Wheel: 2 pcs

Q



Dump Panel: 1 pc

R



Side Panel: 2 pcs

S



Bottom: 1 pc

Tools Required:

*Phillips head screwdriver

*7/16" wrench

*1/4" wrench

Note:

Leave all screws and assembly nuts loose until final assembly.

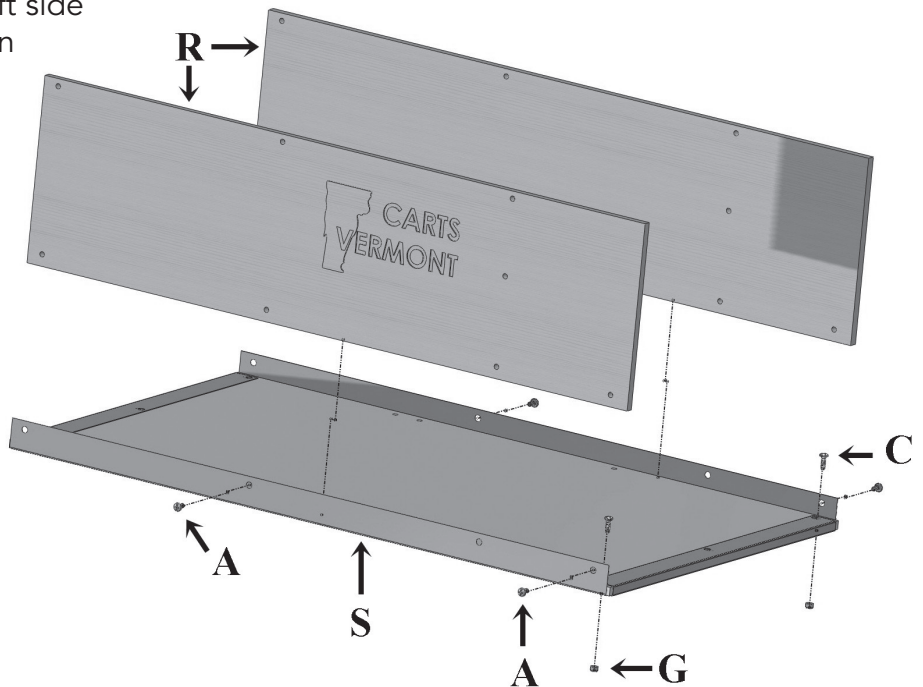
Step 1:

A: Install two $\frac{3}{4}$ " Bolts (C) through the rear trim piece on the Bottom Panel (S) and attach to Lock Nuts. (Lock nuts on bottom side)

B: Place left Side Panel (R) on the left side of the Bottom Panel (S) and fasten with two $\frac{1}{2}$ " Bolts (A).
*Note, logo will be facing out.

C: Place Right Side Panel (R) on the right side of the Bottom Panel (S) and fasten with two $\frac{1}{2}$ " Bolts (A). *Be sure to match hole pattern to Left Side Panel.

S: 1 pc
R: 2 pcs
A: 4 pcs
C: 2 pcs
G: 2 pcs

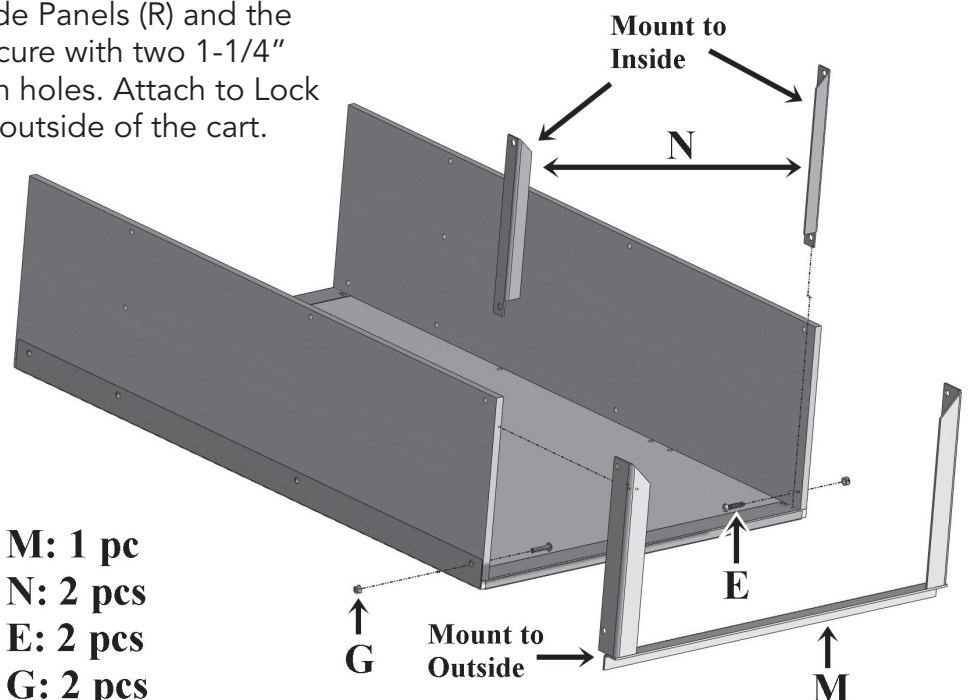


Step 2:

A: Place the Dump Assembly (M) onto the front end of the Bottom Panel (S) and Side Panels (R).

B: Place the Aluminium Angles (N) on the inside of the cart. Align holes with the Side Panels (R) and the Dump Assembly (M) and secure with two 1-1/4" Bolts (E) through the bottom holes. Attach to Lock Nuts with Lock Nuts on the outside of the cart.

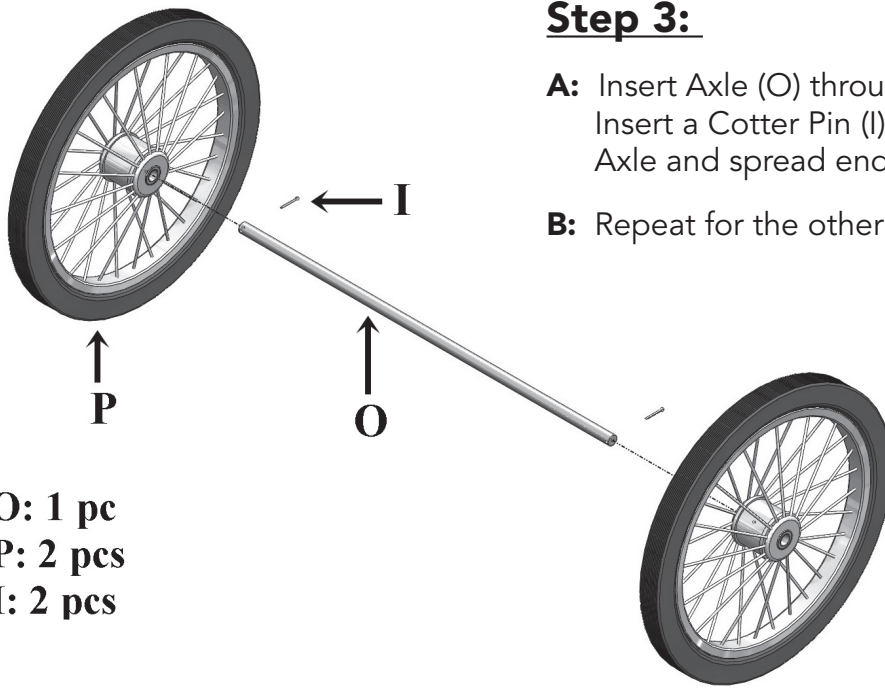
M: 1 pc
N: 2 pcs
E: 2 pcs
G: 2 pcs



Step 3:

A: Insert Axle (O) through the center hole of one Wheel (P). Insert a Cotter Pin (I) through the hole at the end of the Axle and spread ends to form a "Y".

B: Repeat for the other Wheel.



O: 1 pc
P: 2 pcs
I: 2 pcs

Step 4:

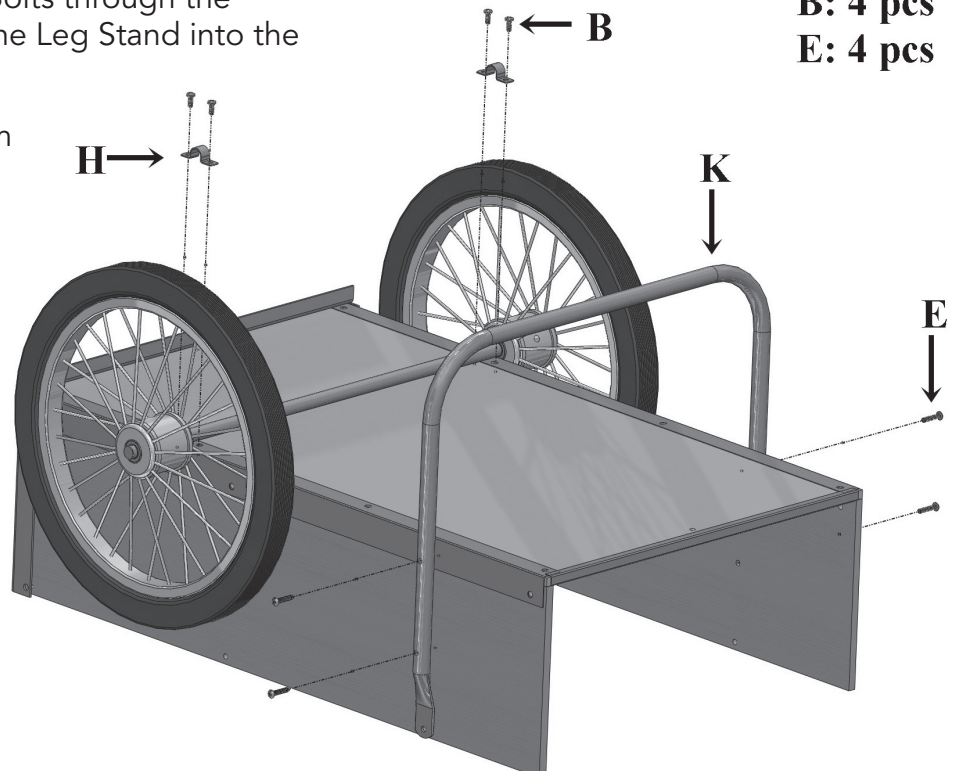
A: Turn cart over (see visual step 4).

B: Spread the Wheels apart on the Axle so they are resting on the Cotter Pins at each end. Attach the Axle Assembly to the bottom of the cart using two Axle Clamps (H) and four 5/8" Bolts (B). (See visual step 4).

C: Slide the Leg Stand (K) over the sides of the cart. Align and thread two 1-1/4" Bolts through the middle and bottom holes of the Leg Stand into the T-nuts (on both sides).

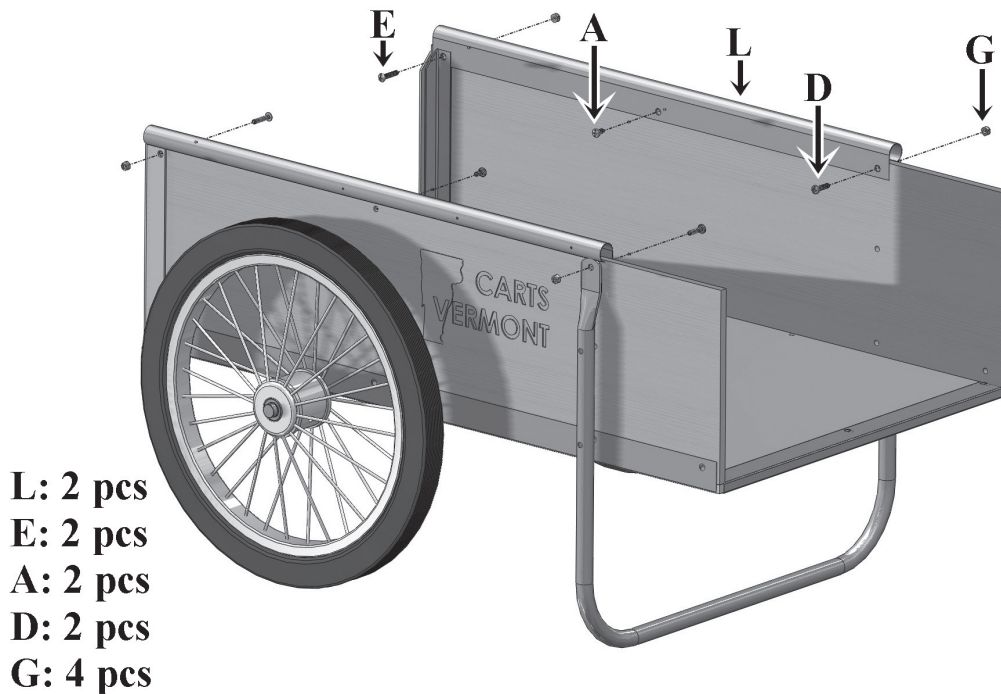
D: Tighten all bolts on the bottom of the cart.

K: 1 pc
H: 2 pcs
B: 4 pcs
E: 4 pcs



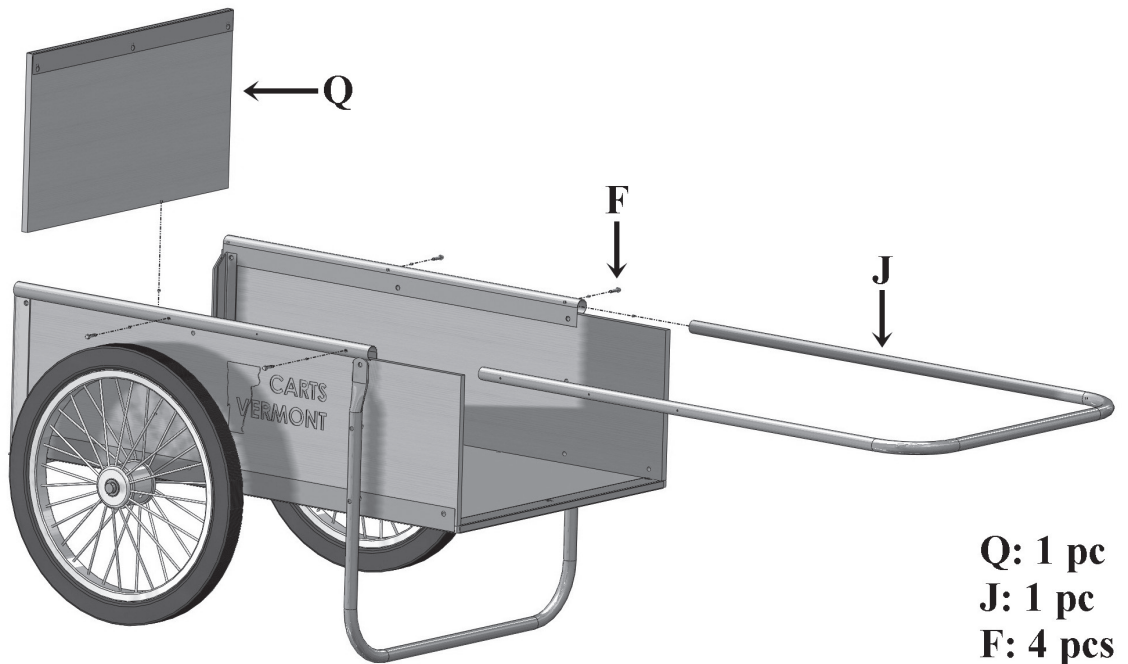
Step 5:

- A:** Turn cart over to its upright position.
- B:** Place one Handle Sleeve (L) over the right side panel. (Flat portion of sleeve will be on inside of the cart, mount sleeve between Aluminium Angles and Side panel). Insert a 1-1/4" bolt through the top hole of the Aluminium Angle and fasten with a Lock Nut on the outside of the cart.
- C:** Insert a 1/2" bolt (A) through the center hole of the Handle Sleeve and secure to the T-nut in the Side Panel. Then insert a 1" Bolt through the front hole of the Handle Sleeve and top hole of the Leg Stand and secure with a Lock Nut on the outside of the cart.
- D:** Repeat for the Left side. *Leave bolts loose to allow for easier installation of the Handle in Step 6.



Step 6:

- A:** Slide Handle (J) into Handle Sleeves (may need to be tapped in with a hammer). Align the holes in the Handle with those of the Handle Sleeves (Handle may be placed in one of two positions). Secure with two Self-Tapping Screws (F). *Note, with Handle in extended position, use the rear and center holes for the Self-Tapping Screws.
- B:** Slide the Front Panel (Q) down between the Dump Assembly and the Aluminium Angles. Adjust the Aluminium Angles by moving them in or out so that the Front Panel will slide up and down easily. Tighten the four bolts that attach the Aluminium Angles to the cart. Recheck the fit of the Front Panel to ensure it slides freely.
- C:** Tighten all bolts on the cart.



Maintenance and Care for your Model 20 Home and Garden Cart

- Do: Protect your cart from severe weather whenever possible.
- Do: Refinish your cart yearly with a good grade of exterior water based stain.
- Do: Tighten hardware periodically; it will loosen under normal use.
- Do: Lubricate wheel ball bearings with a light machine oil such as "3 in 1" two drops in both sides of bearings once a year. Caution: Do not over-oil; over-oiling attracts dirt and dust which can damage the bearings.
- Do: Periodically check tire pressure. Over time, tires will normally lose air pressure. Inflate to a maximum of 35 PSI. Caution: Do not over-inflate tires.

Home and Garden Cart Safety:

- Your cart is designed to have a balance point which allows you to move loads with ease. Due to this design you must observe a few simple safety precautions.
- Never walk down a hill or grade pulling the cart behind you. You could trip or fall, losing control of the cart.
- Always use caution when traversing on hill sides.
- Never sit or stand in or on the cart.
- Always balance your load in the cart.
- Never push a loaded cart over curbs or objects.
- Never tow the cart with motorized equipment or vehicles.
- **SPECIAL CAUTION:** When re-inflating tires, inflate to a maximum of 35 PSI. Over-inflation of tires could cause serious injury.



P.O. Box 54 • Lyndonville, VT 05851 • 1-800-732-7417 • Fax 1-802-748-0067

www.cartsvermont.com