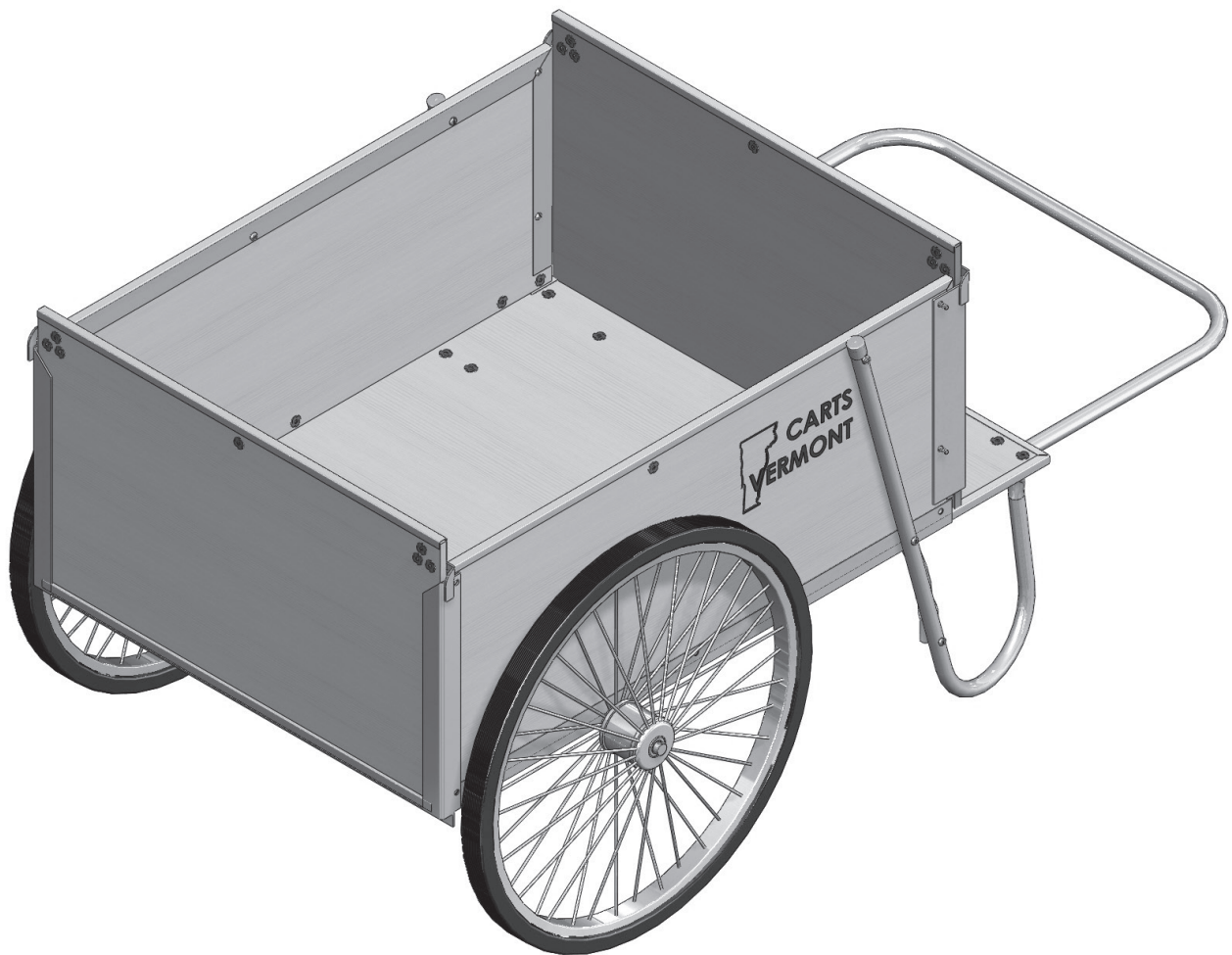


# **CARTS VERMONT**



Model 26:  
With Rear Gate

## Written Assembly Instructions

Step 1: Remove the four ½" Bolts (A) from the rear of the cart on each of the Side Panels as seen in Visual Step 1. These ½" Bolts will be used for mounting the Gate Brackets.

Step 2: Install the four 1" Bolts (B) into the T-nuts from Step 1, tighten bolts into T-nuts leaving the ends of the bolts exposed on the outside of the cart.

Step 3: Install the left and right Gate Brackets (D) onto the ends of the four bolts (B) as seen in Visual Step 3. Secure the brackets using the four Lock Nuts (C). Do Not fully tighten the four Lock Nuts until final assembly.

Step 4: Install the left and right Lock Brackets (E) onto the Rear Panel (F) using the four ½" Bolts (A) from Step 1. Securely tighten the bolts.

Step 5: Slide the rear Gate Assembly between the Gate Bracket and the ends of the Side Panels. Adjust the Gate Brackets until the gate slides up and down freely, and then tighten all assembly screws and nuts.

### Hardware

A

Removed From  
Cart on Step 1



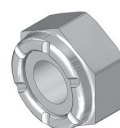
**1/2" Bolt: 4 pcs**

B



**1" Bolt: 4 pcs**

C



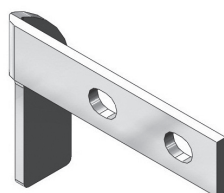
**Lock Nut: 4 pcs**

D



**Gate Bracket: 2 pcs**

E



**Lock Bracket: 2 pcs**

F

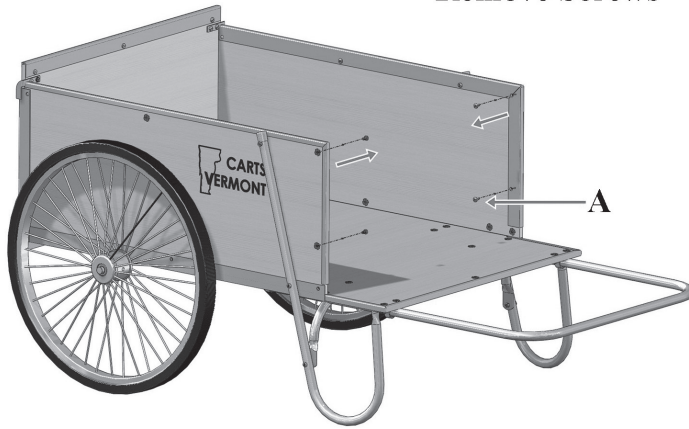


**Rear Panel: 1 pc**

# Visual Assembly Instructions

1

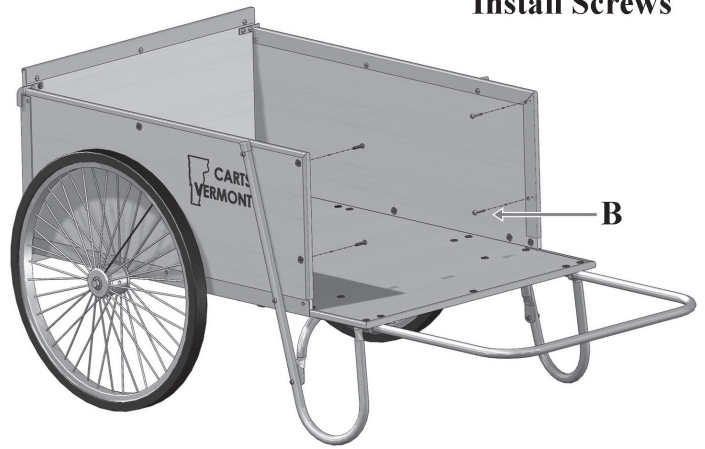
**Remove Screws**



**A: 4 pcs**

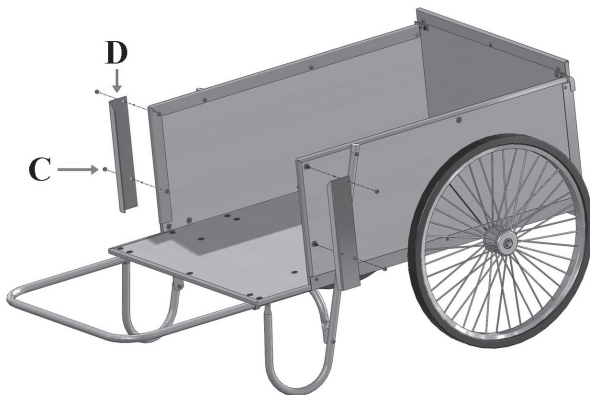
2

**Install Screws**



**B: 4 pcs**

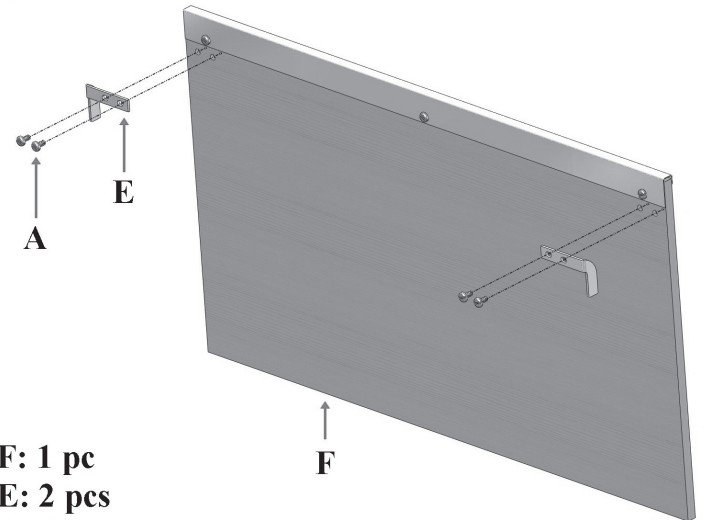
3



**D: 2 pcs**

**C: 4 pcs**

4

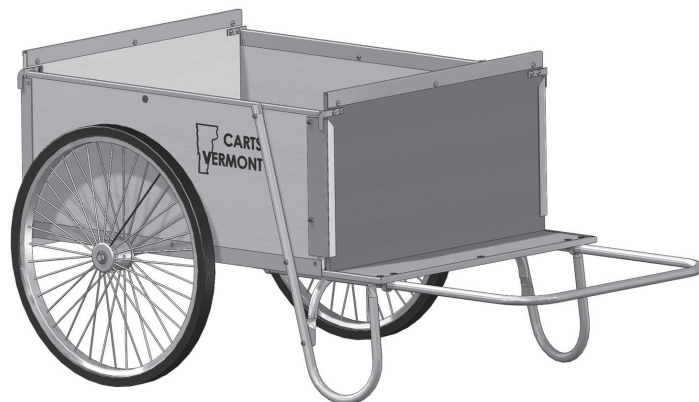


**F: 1 pc**

**E: 2 pcs**

**A: 4 pcs**

5



**Complete**

## Tools Required:

**\*Phillips Head Screwdriver**

**\*7/16" or Adjustable Style Wrench**

**\*Note: Leave all assembly screws and nuts loose until final assembly**



---

P.O. Box 54 • Lyndonville, VT 05851 • 1-800-732-7417 • Fax 1-802-748-0067

[www.cartsvermont.com](http://www.cartsvermont.com)