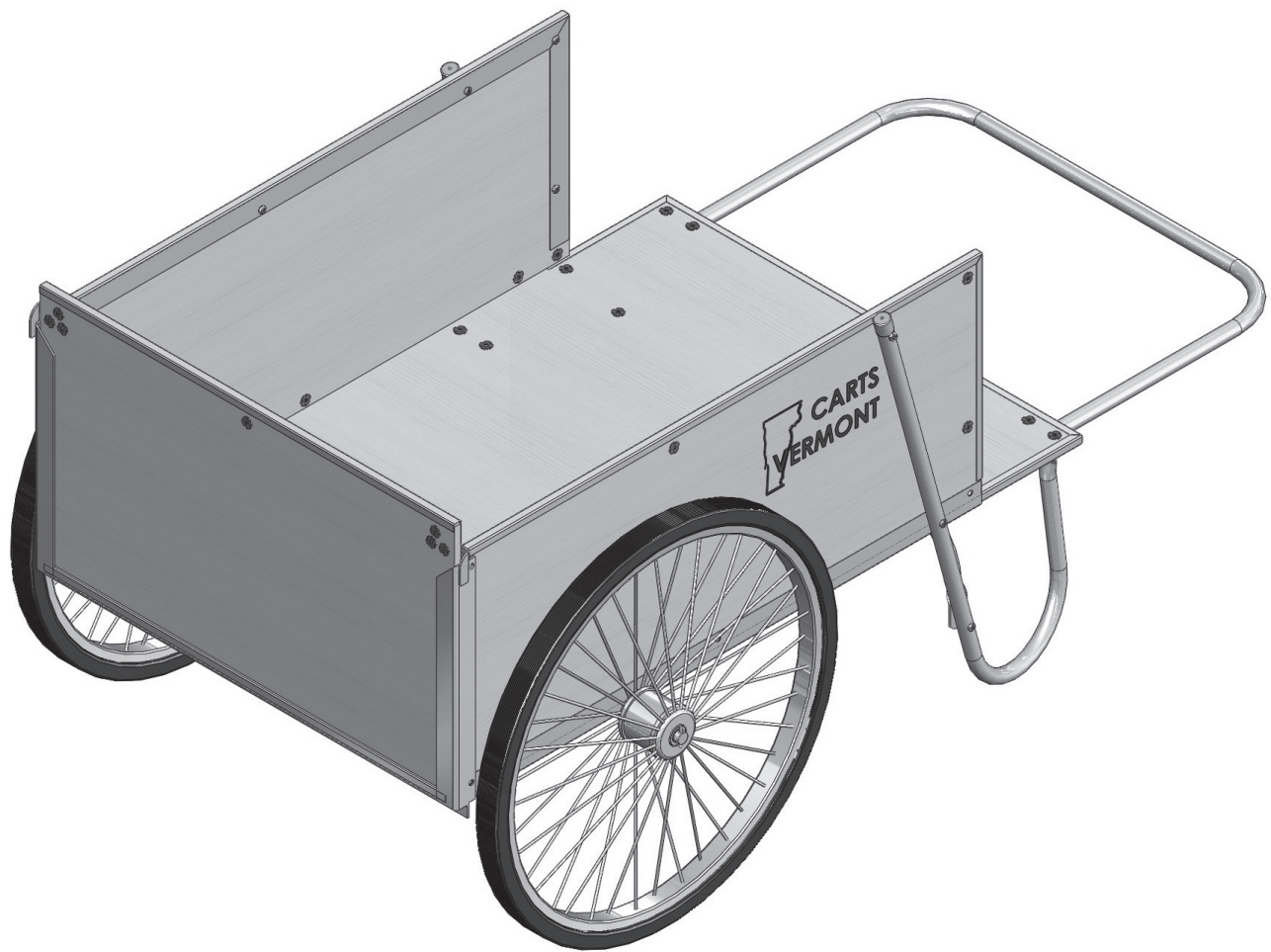
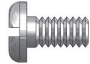
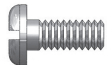





# **CARTS VERMONT**



**Model 26:**  
**Dumpfront Cart**

# Parts in Hardware Bag

<b>A</b>		8 pcs 1/2"
<b>B</b>		10 pcs 5/8"
<b>C</b>		2 pcs 3/4"
<b>D</b>		10 pcs 1-1/4"
<b>E</b>		2 pcs 1-3/4"

**Bolts**

**F**



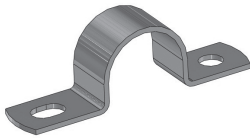
**Cotter Pin: 2 pcs**

**G**



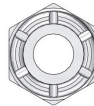
**End Cap: 2 pcs**

**H**



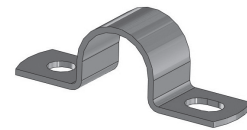
**Handle Clamp: 4 pcs**

**I**



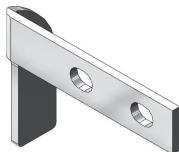
**Hex Locknut: 8 pcs**

**J**



**Axle Clamp: 2 pcs**

**K**



**Stop Bracket: 2 pcs**

## Tools Required:

- \*Phillips Head Screwdriver
- \*7/16" (or adjustable style) wrench
- \*Pliers
- \*Yardstick or Measuring Tape

## Note:

Leave all screws and assembly nuts loose until final assembly.

- \*There will be two extra "B" screws when final assembly is complete.

# Cart Parts

L



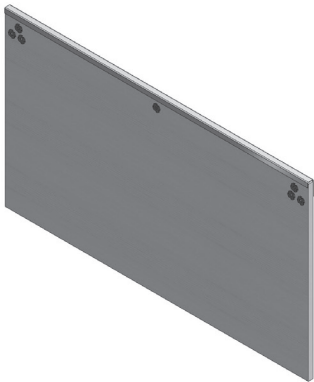
Bottom Panel: 1 pc

M



Side Panel: 2 pcs

N



Front Panel: 1 pc

O



Handle: 1 pc

P



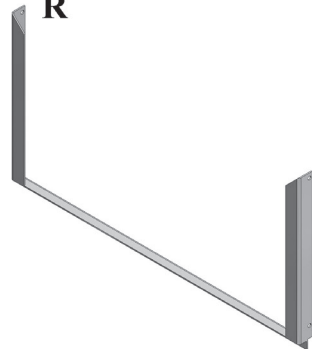
Cross Brace: 1 pc

Q



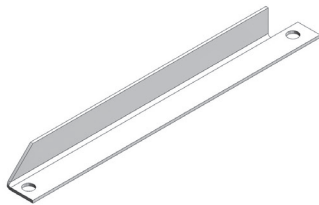
Leg Stand: 2 pcs

R



Dumpfront Frame: 1 pc

S



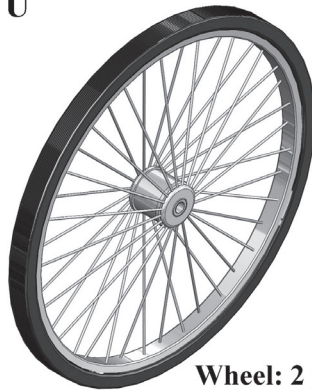
Corner Angle: 2 pcs

T



Axle: 1 pc

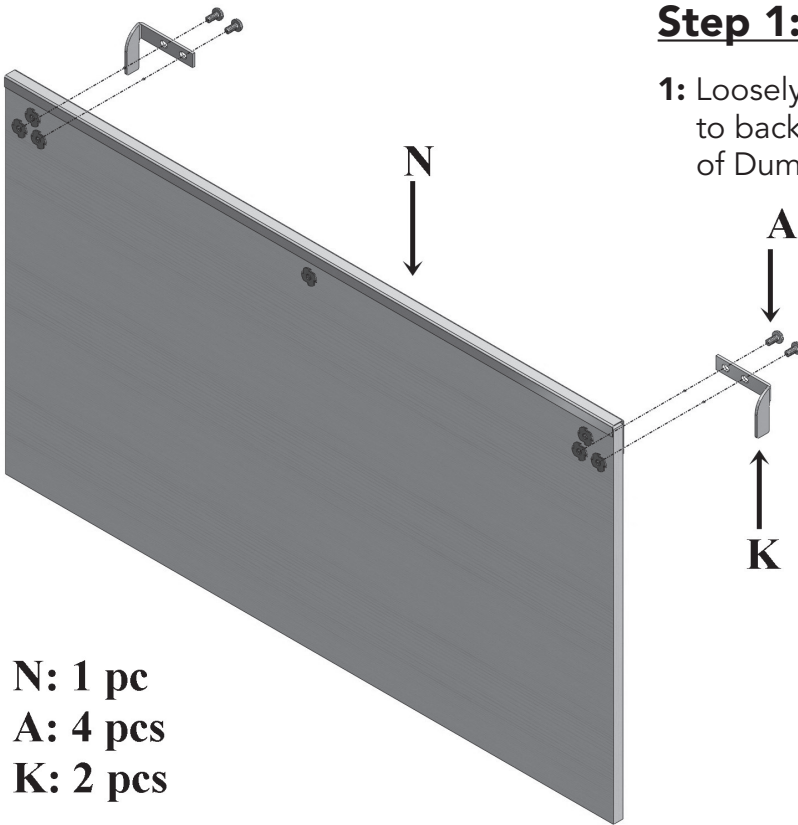
U



Wheel: 2 pcs

## **Step 1: Assemble Dumpfront Panel**

- 1:** Loosely install left and right side Stop Brackets (K) to back side (side with wide face of edge protector) of Dumpfront Panel (N) using four ½" (A) Bolts.



**N: 1 pc**  
**A: 4 pcs**  
**K: 2 pcs**

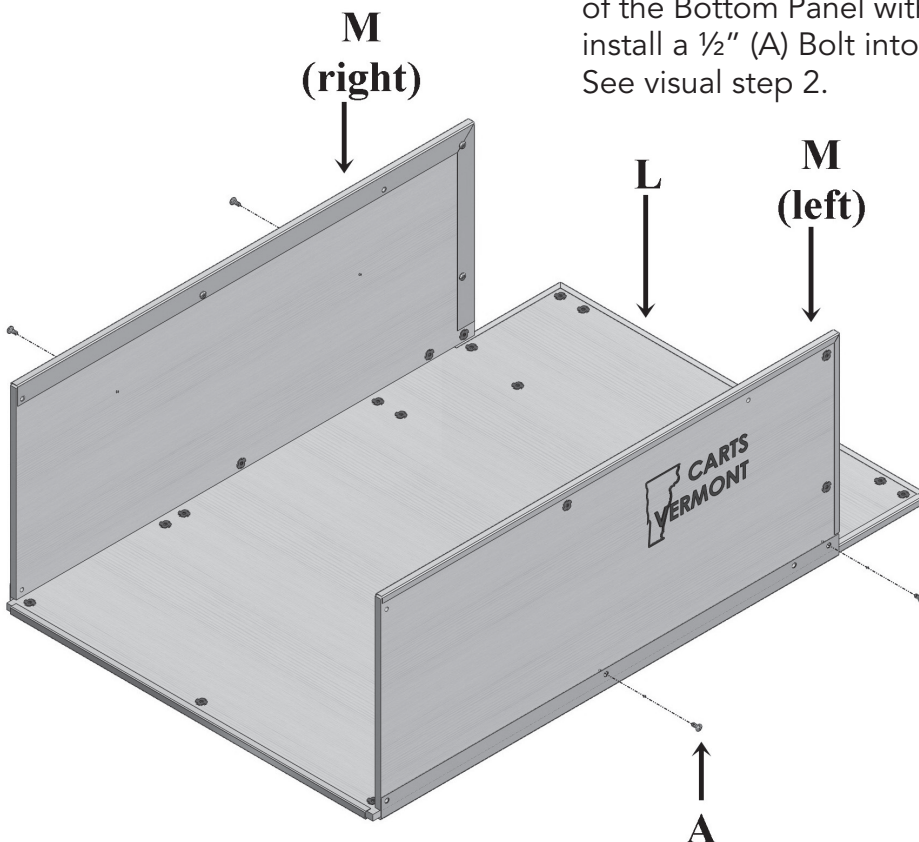
---

## **Step 2: Install Side Panels**

- 1:** Position Bottom Panel (L) as showing in visual step 2.

- 2:** Position left Side Panel (M) (panel with logo) on the left side of the Bottom Panel with logo facing to the outside. Loosely install a ½" (A) Bolt into the T-nut in the panel. See visual step 2.

- 3:** Position right Side Panel (M) as shown in visual step 2. Note that the wide edge of the edge protector faces in and the angled end of the edge protector is at the rear. Loosely install a ½" (A) Bolt through the bottom angle and into the T-nut in the panel.



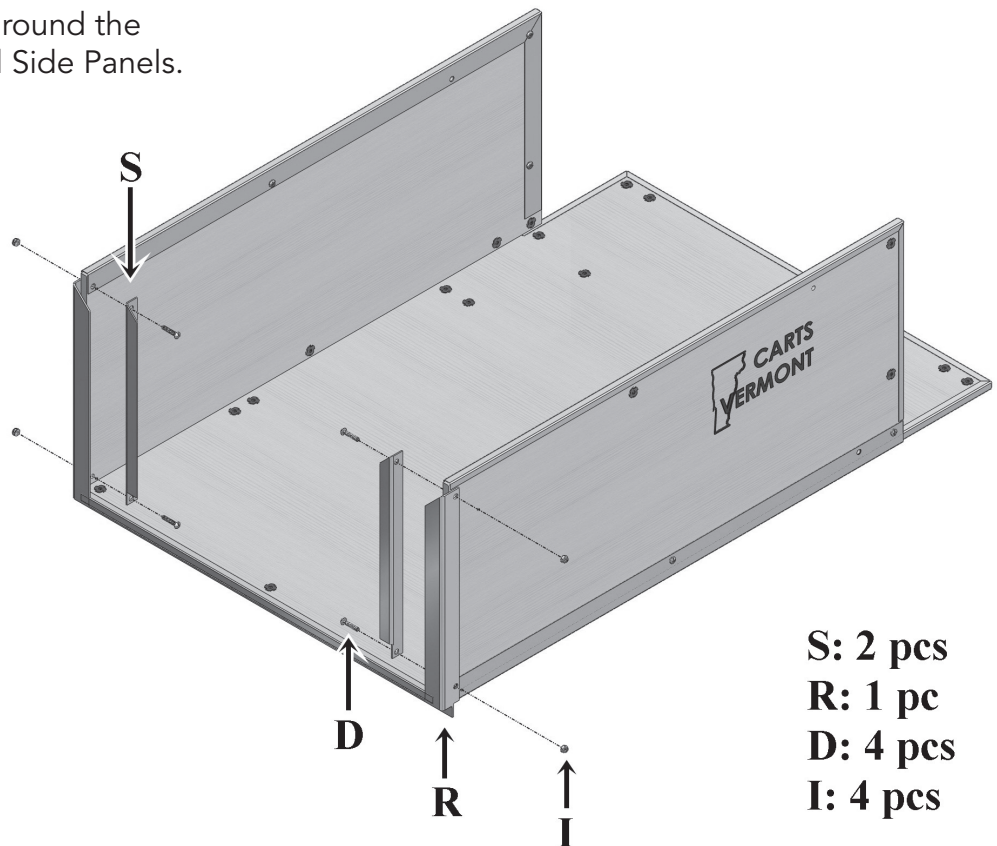
**L: 1 pc**  
**M: 2 pcs**  
**A: 4 pcs**

### **Step 3: Install Dumpfront Frame and Corner Angles**

**1:** Install Dumpfront Frame (R) around the front ends of the Bottom and Side Panels. See visual step 3.

**2:** Position the left and right side Corner Angles (S) as shown in visual step 3. Loosely attach the Corner Angles to the Side Panels and Dumpfront Frame using four 1-1/4" (D) Bolts with Locknuts (I), Locknuts on outside of Side Panels.

**3:** Slide the Dumpfront Panel (R) into the channel between the Dumpfront Frame and the Corner Angles.



### **Step 4: Install Leg Stands**

**1:** Remove Dumpfront Panel

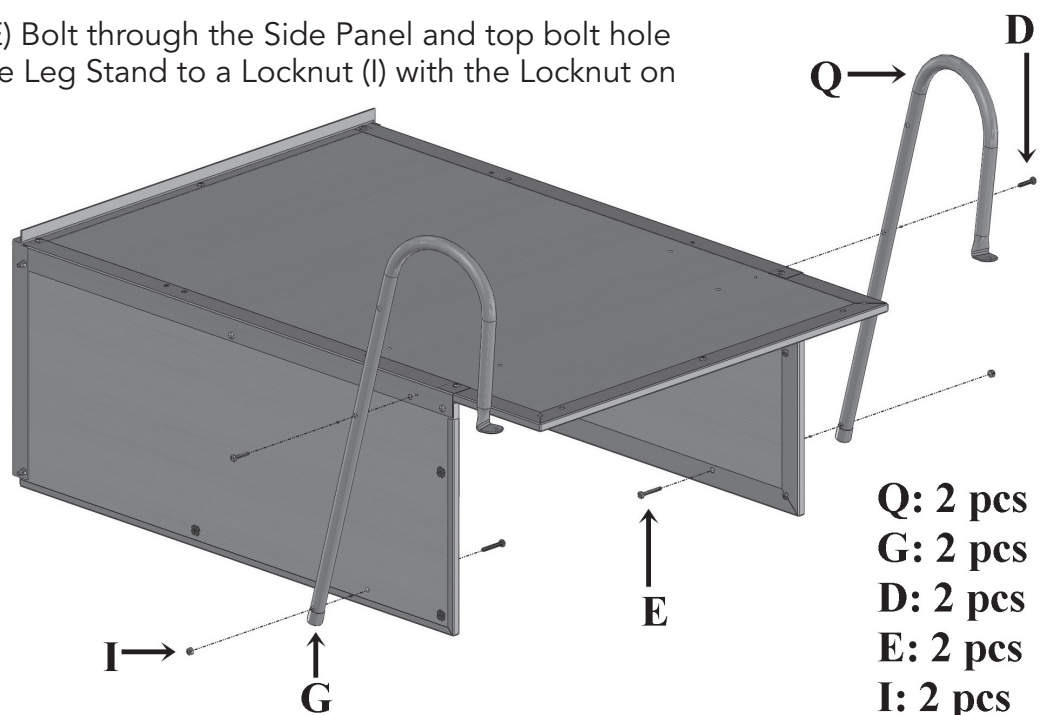
**2:** Turn the cart body over as seen in visual step 4.

**3:** Install the (green) End Caps (G) onto the Leg Stands (Q).

**4:** Loosely attach a 1-3/4" (E) Bolt through the Side Panel and top bolt hole (closest to End Cap) of the Leg Stand to a Locknut (I) with the Locknut on the outside of the cart.

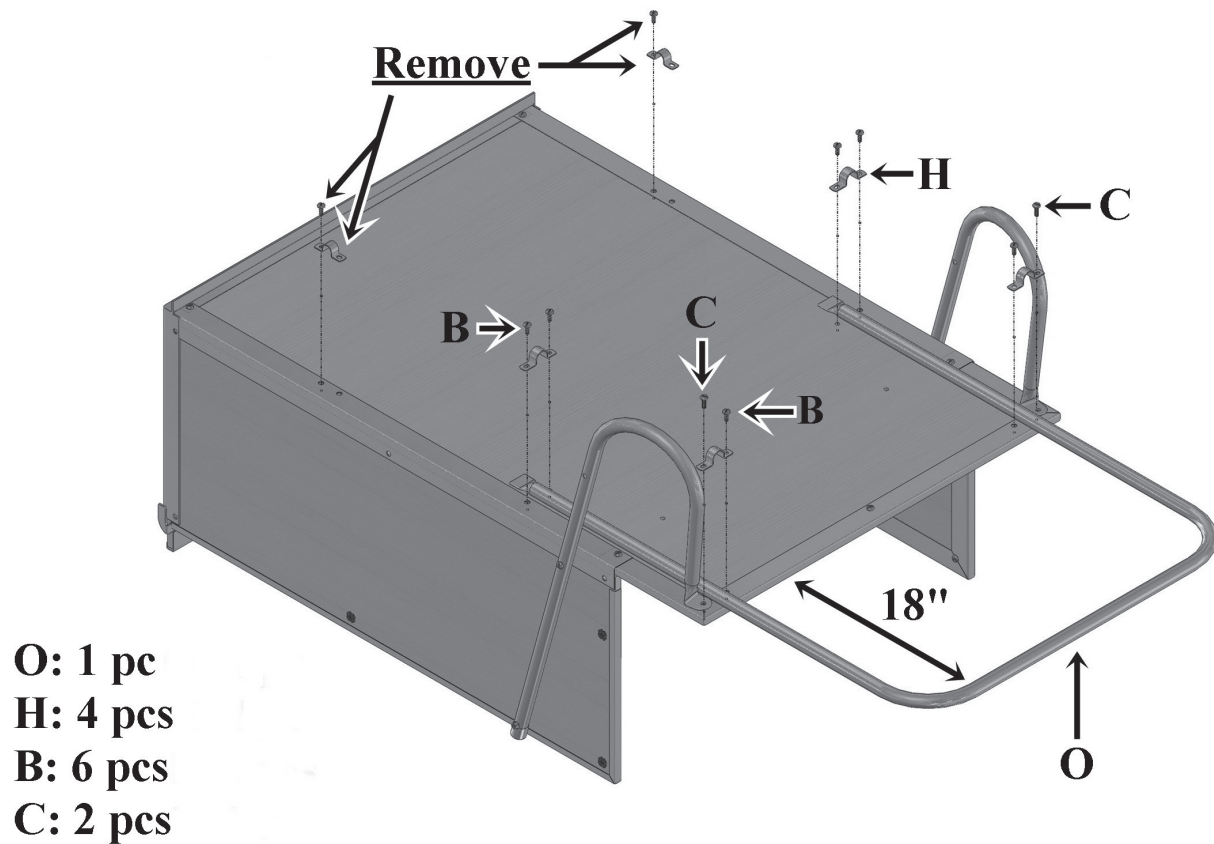
**5:** Loosely attach the Leg Stand to the side panel and Bottom Angle by installing a 1-1/4" (D) Bolt through the center bolt hole of the Leg Stand and attach to the T-nut on the Side Panel.

**6:** Repeat steps 4 and 5 for the right side Leg Stand.



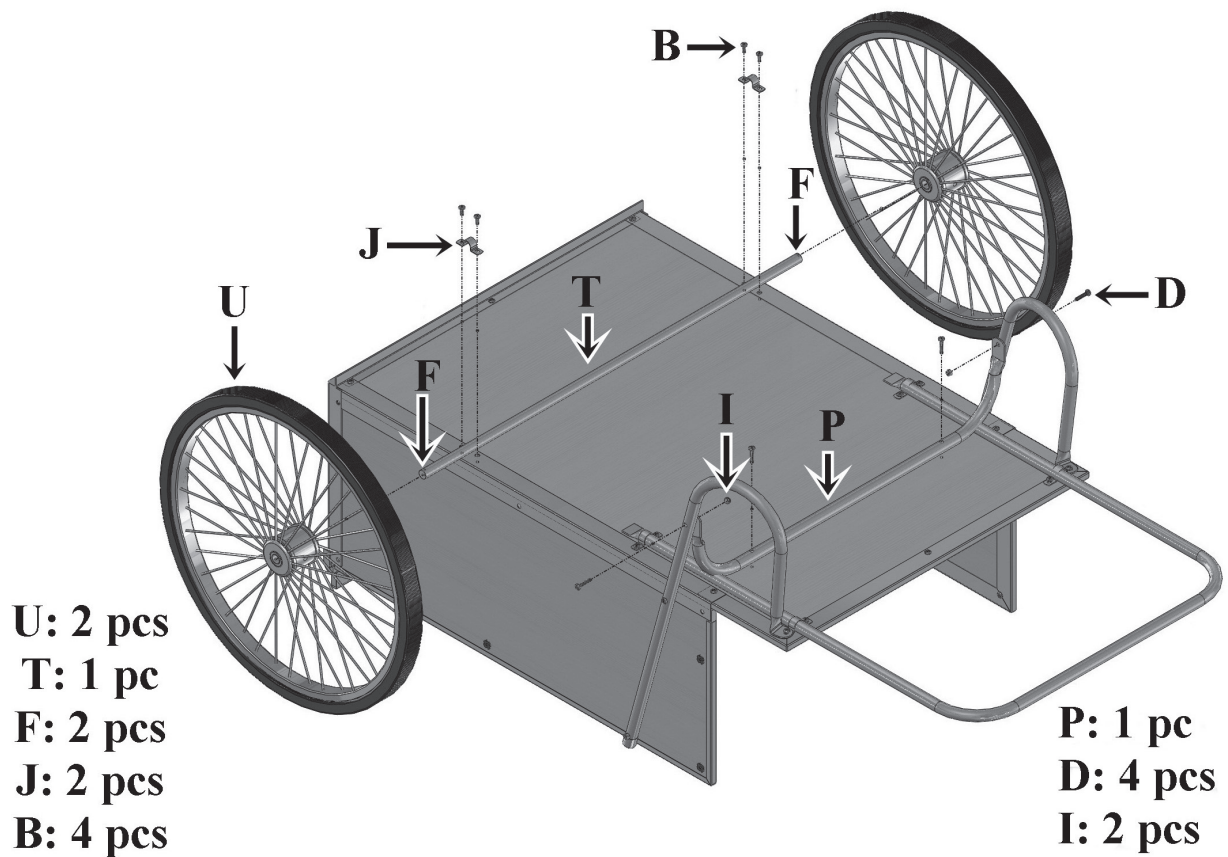


## **Step 5: Install Handle**



- 1:** Slide Handle (O) into position as showing in visual step 5.
- 2:** At the rear (open end) of the cart, position the Handle Clamps (H) with the long ends facing the outside of the cart. Align the outside holes of the clamps with the holes in the Leg Stand and Edge Protector. Loosely install a  $\frac{3}{4}$ " (C) Bolt in the Outside Holes Only.
- 3:** Loosely attach the inside end of the clamps with a  $\frac{5}{8}$ " (B) Bolt.
- 4:** At the center of the cart, position the Handle Clamps (H) with long ends to outside of cart and loosely install  $\frac{5}{8}$ " (B) Bolt through both holes and attach to T-nuts in the Bottom Panel.
- 5:** Adjust the Handle to 18" away from the rear of the Bottom Panel. Securely tighten the screws in the four clams.

## **Step 6: Install Cross Brace and Wheels/Axle Assembly**



- 1:** Position Cross Brace (P) as seen in visual step 6.
- 2:** Loosely attach Cross Brace (P) to the Bottom Panel using two 1-1/4" (D) Bolts.
- 3:** Attach ends of the Cross Brace to the Leg Stands using 1-1/4" (D) Bolts and Locknuts (I) with Locknuts on the inside.
- 4:** Place Wheels (U) on ends of Axle (T) and add Cotter Pins (F) to holes in the ends of the Axle. Spread Cotter Pin ends slightly to hold Wheels in place.
- 5:** Position Wheels/Axle assembly on cart body and align holes in axle clamps with holes in bottom angles. Fasten the Axle Clamps (J) using four 5/8" (B) Bolts.
- 6:** Securely tighten all Bolts and Locknuts on the bottom of the cart. Spread the ends of the cotter pins apart to form a "Y".

# Safety Instructions:



**WARNING:** Read and follow the safety instructions below to help prevent injury to yourself and others.

- To help prevent the cart from rapidly tipping forward:
  - Do not concentrate weight in the dump-front end of the cart. When loading the cart, always load from the handle end first. Always balance the load in the cart.
  - Always unload from the dumpfront end of the cart first. Do not leave heavy material at the front of the cart while unloading.
- Do not allow children to play with the cart.
- Do not allow anyone to sit, stand, or climb into the cart.
- Do not overload the cart, the cart can carry a maximum load of 400 lbs. Always balance the load and do not place excessive weight forward of the axle.
- When operating the cart on slopes, or on uneven terrain, carry smaller loads and use extra caution. Never walk down a slope while pulling the cart behind you. You could trip or fall, losing control of the cart.
- If unloading the cart on uneven terrain, clock the wheels to prevent the cart from rolling away.
- Do not use the cart at a speed faster than normal walking speed.
- Do not park a loaded cart on a slope – it could roll away.
- Do not tow the cart with any powered equipment.
- Avoid obstacles such as curbing or steps. If unavoidable, pull cart slowly over these obstacles.
- Do not exceed a maximum of 35 PSI when inflating the tires. Over-inflation of tires could cause serious injury.

## General Use Instructions:

- It is usually easier to pull the cart rather than to push it. When pulling a cart, the force needed to move the cart is also lifting the cart upward, which makes it easier to move the cart over objects or soft ground.
- To load heavy items, tip the cart on end and then slide the item into the front of the cart. Hold the handle firmly and slowly lower the cart to its normal operating position.
- Wide loads can often be placed crosswise on the cart to avoid sudden tipping, do no concentrate the load forward of the axle.
- Avoid moving the cart diagonally across a slope. Doing so will put extra weight on one wheel which may damage the wheel.

## Maintenance And Storage:

- The hardware will loosen under normal use. Tighten hardware periodically.
- Protect your cart from severe weather whenever possible.
- A yearly application of a good grade of exterior water base stain will help to extend the life of the wood panels.
- Stand the cart on its dump front end for more compact storage.
- Periodically check tire pressure and inflate equally to prevent pulling to one side.  
**CAUTION: INFLATE TO A MAXIMUM OF 35 PSI. DO NOT OVER – INFLATE TIRES.**



P.O. Box 54 • Lyndonville, VT 05851 • 1-800-732-7417 • Fax 1-802-748-0067

**[www.cartsvermont.com](http://www.cartsvermont.com)**